

# Development asset

## Helena

### Description

Helena is a Triassic discovery, 6 km to the Southwest of Banquo. Well 211/13-1 discovered hydrocarbons within 3 zones of the Upper Triassic red beds section and tested 10.3mmscf/d gas and 3,300 bbls/d condensate.

### Key 2009 Milestones

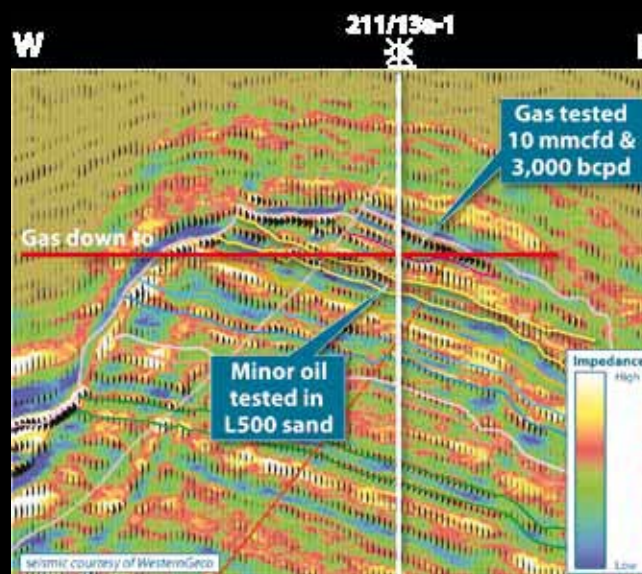
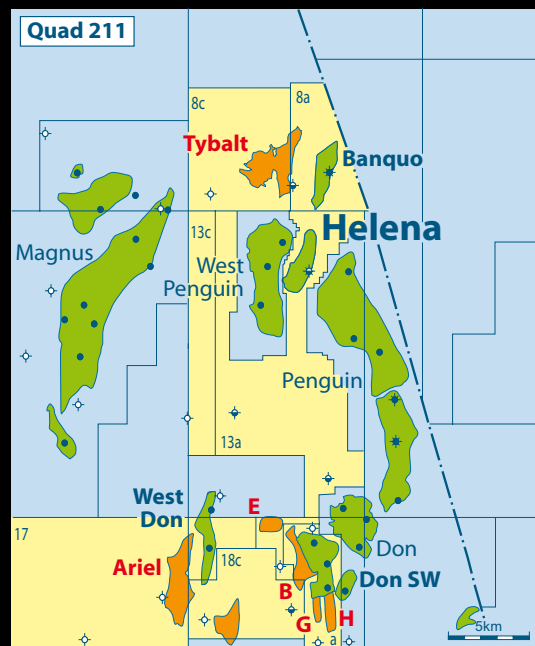
- ▼ Seek strategic partners to participate in the joint appraisal and development of the discoveries in the area.
- ▼ Prepare for an appraisal well during 2009 or 2010.
- ▼ Prepare detailed, conceptual development scenarios to jointly develop alongside the nearby Banquo discovery and Tybalt prospect targeting a subsea tie-back to local host infrastructure (such as Magnus, the Dons, Thistle or through the Penguin facilities), which could allow for first oil as early as 2011.

**Licence/Block**  
P296 (211/13a Rest of Block including Penguin Field exc. Penguin West and Penguin East)

**Contingent Resources (net)**  
2.5 mmbbls & 5.5 bcf  
(5.0 mmbbls & 11.0 bcf following Dana transaction)

### Equity Stake

50.000% (100.000% following the Dana Acquisition)



Section showing relative acoustic impedance